

# *This Is The Day*

1640 1891 1955



# *This Is The Day . . .*

## The Story of a New Chapter in the Life of The Memorial Congregational Church

*"A cloud of witnesses around  
Hold thee in full survey;  
Forget the steps already trod  
And onward urge thy way,  
And onward urge thy way."*

ON the afternoon of Friday, March 27, 1891, at the dedication of the present church, a wise man spoke words strangely prophetic of the program being undertaken in January of 1955. In his sermon that historic afternoon, Dr. Arthur Little of Dorchester said two things well worth noting today:

"A church building is a monitor in the community silently pointing to God; invested with a sort of sacredness.

"Churches should be open other days besides Sundays. The church should be more the centre of social life. Extend the hand to strangers. What

a blessing to the young people if the church could be the centre of their social life."

*That day has come.* With us the prophecy comes true. For now — two generations later — it is the privilege of Memorial Congregational Church, still "pointing to God," to serve as a vital center of the best in community life. In doing so, we are building in the atmosphere of a long and glorious heritage tracing far back into Colonial history.

Ever since 1839, when our church became independent, one fine aspect of that heritage has been the tireless activity of the Woman's Organization — earlier known as the Ladies' Benevolent Society. Their zeal for both Home and Foreign Missions — as well as for work close at hand — has written a splendid record. We learn that way back in 1849 "\$120 was sent to the Massachusetts Home Missionary Society, and \$50 to the American and Foreign Christian Union, leaving 12 Cents in the treasury." For that day these were substantial sums. Their first Strawberry Festival, in 1893, yielded \$15.70 — compared with the \$600 of 1954. Times have changed!

Nor do we stand alone in the glow that tradition casts upon our community. In our midst is one of the beloved national shrines — the Wayside Inn, immortalized by Longfellow and restored for our generation by Henry Ford — and the exquisite "Martha-Mary Chapel." They have made the name of Sudbury a household word to thousands of Americans.

As she goes forward into a new day, Memorial Church is thus building on deep and sure foundations.



The Choir has been a prominent feature at Memorial since 1891.

# An Era of Growth . . .

Sudbury is a community to which rapid growth has come only lately. Unbelievable as it may sound, we are told that the census of 1940 was the first to show an increase over the first one of 1790! But an *increase of 100% in our population is predicted within the next six or seven years!* Figures on current building construction and on increasing public school enrollment agree. The trend is nation-wide. As a recent editorial in *Life* put it: "The prospect ahead for the underlying U.S. economy is Growth — with a very big G."

Change is seen all around us. Until recently a rural community, we are now about to join Lincoln in building a \$1,500,000 regional high school. Homes are going up as never before. Our days as a quiescent country church are over. Like the town, the church is at the threshold of a great forward push. Neighboring communities with spreading industrial plants are looking for home sites. Sudbury has ample acreage available, and 70 miles of roads. The suburban tide is reaching us. We are the last "residential" community within reasonable distance of Boston that has plenty of room to grow. There is no escaping the conclusion!

## Children, Children, Children . . .

Another thing is worth notice: a majority of the incoming home-makers are families with young children. This is most significant for the future. It is the fact behind a 25% increase in our Sunday School enrollment in one year! And it means that an added Church School building is absolutely necessary.

Fortunately, we have an acceptable Sanctuary, but our accommodations for Sunday School teaching are by modern standards almost primitive. With eleven organized classes — 24 in pre-school group and 45 in the First and Second Grades, for example — we are already forced to decidedly undesirable makeshifts for class space, and have no chance to expand.

The life and growth of our church are bound up with the life and growth of our community. As the only church in South Sudbury, with a recognized leadership, our responsibility to the community is clear. If the Public School needs to build, so do we!

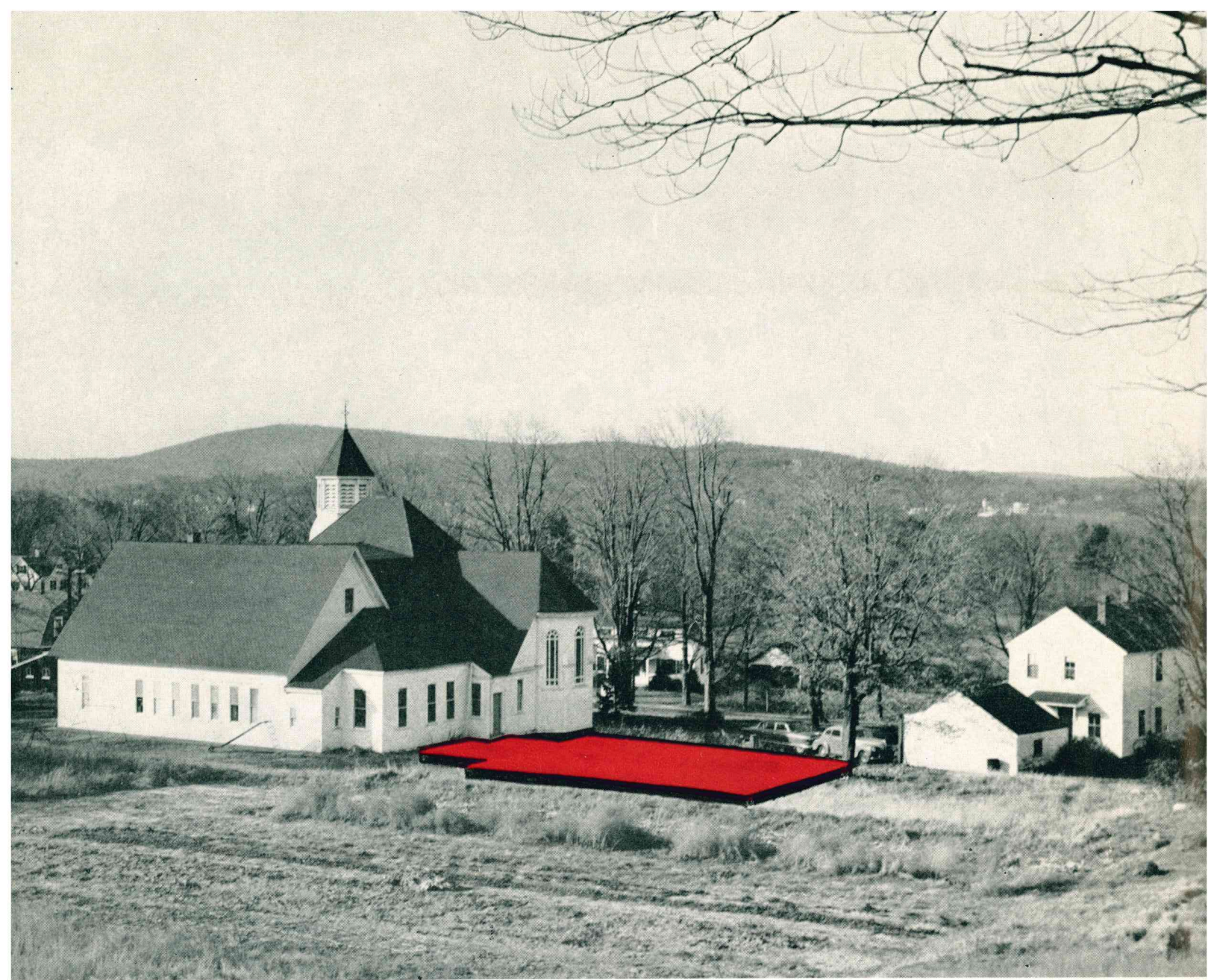


*Fine teaching and learning deserves real classroom conditions. Students should be able to take notes.*



*The best study habits are hard to acquire under conditions where sights and sounds are confusing.*





The present building from the rear, with Addition indicated. Parsonage at right.

## *The Proposed Building . . .*

As can be seen on these two pages, the proposed building is an *addition*, to the north — directly connected with the present building, with which it will harmonize in general style. In floor space it is somewhat larger than the present chapel or parish house. More important, when entered from the present structure it is a “split-level” building of two floors.

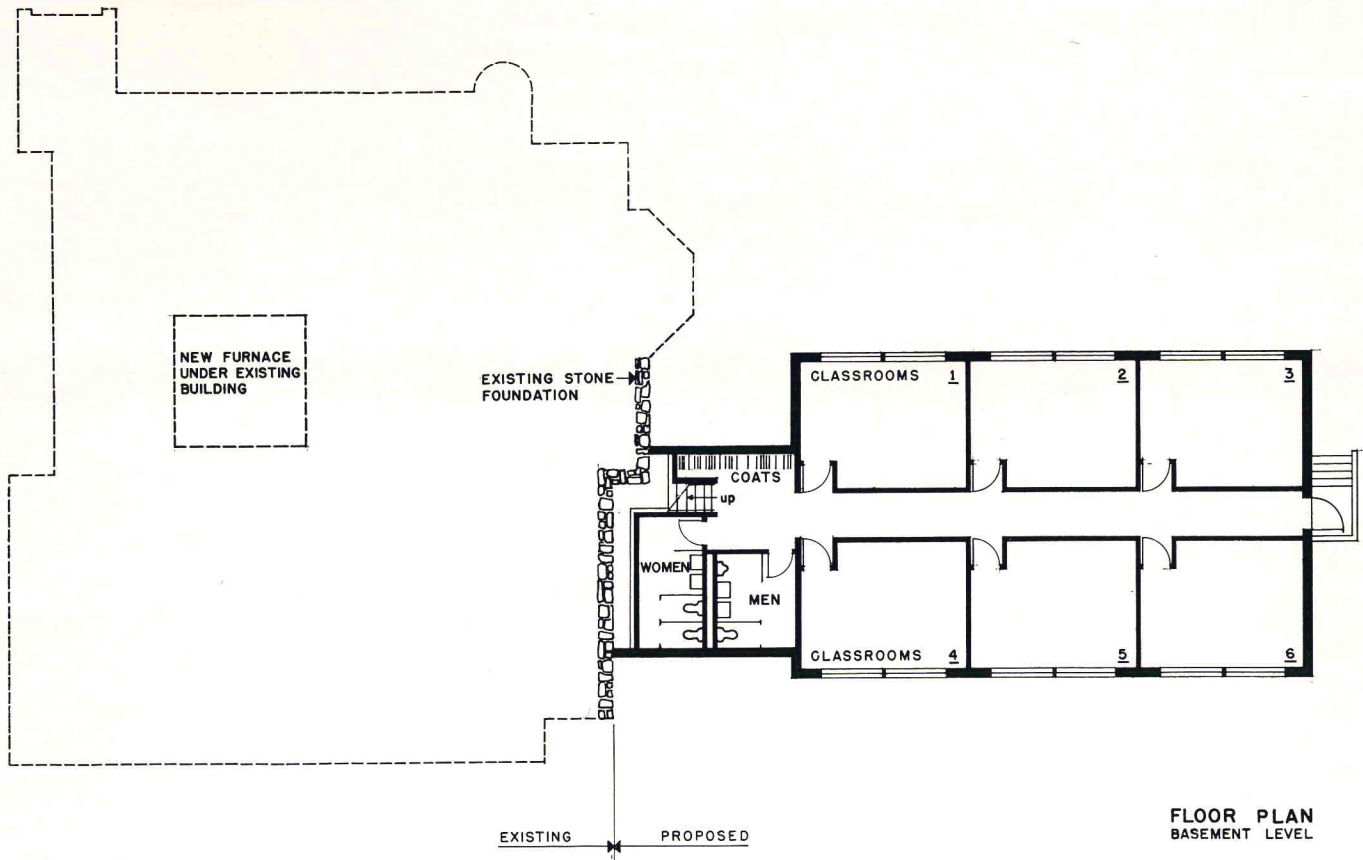
One can enter the building from the outside. If entering from the present building, one goes *up* half a dozen steps to the Main Floor, or *down* a short flight to the Ground Floor. A new passage-way, or corridor, between the Sanctuary and present Parish Hall, will give convenient access without disturbing any activity that may be going on.

The plans are the result of careful thought on the part of Church and Sunday School officers. They will give us the advantage of modern concepts of church program, especially in Christian education. And the addition will later make it possible to rearrange the space in the old chapel — to provide more classrooms.

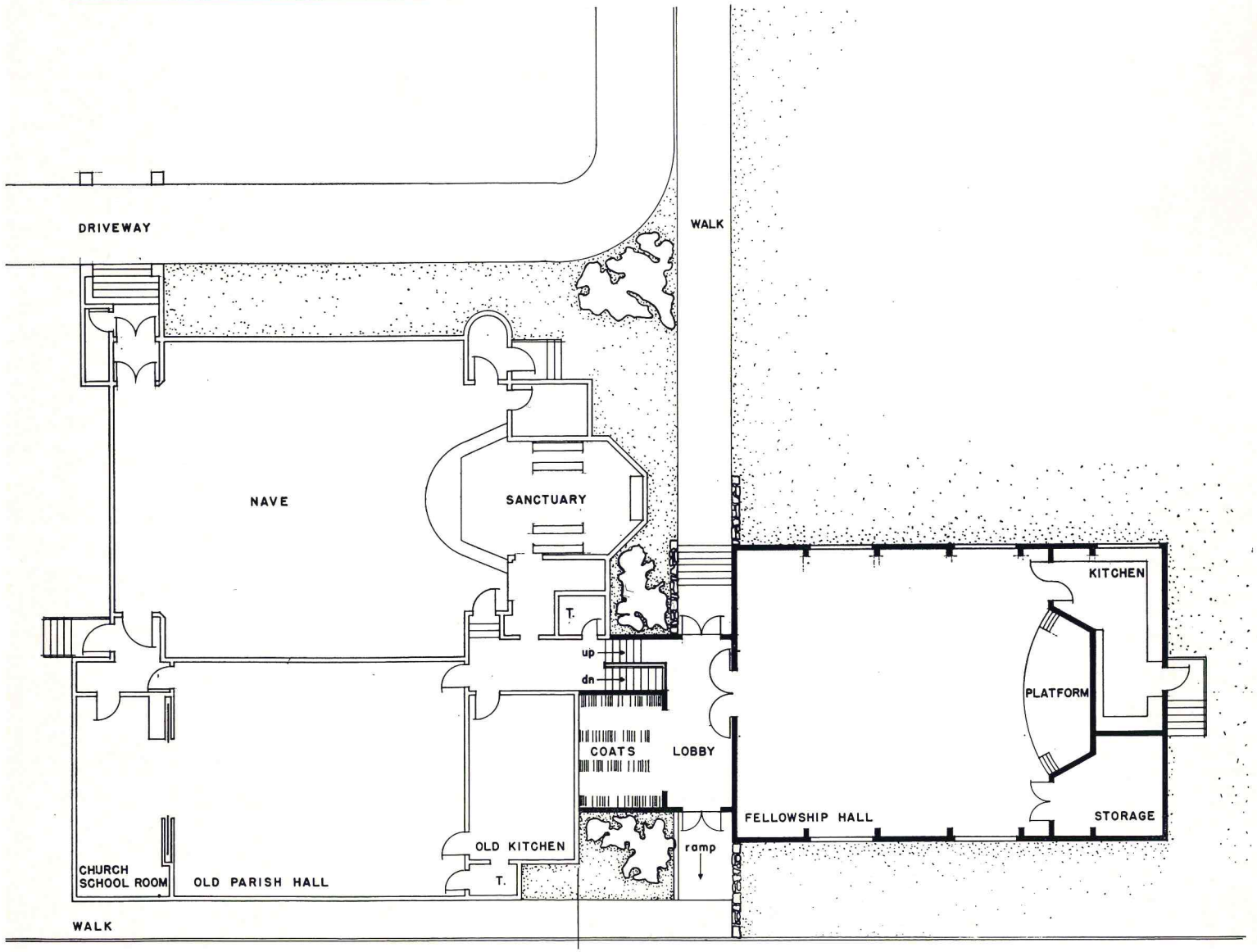
The new Main Floor will contain an excellent Fellowship Hall — with platform or stage, storage space and modern kitchen extremely useful in the serving of dinners.

The Ground Floor — with good light — will contain *six quiet classrooms* of proper size, coat room and lavatories for men and women.

The net result will be to the great advantage of Sunday School, Choir, dramatics, other youth activities, and the general social life of the parish.



GROUND FLOOR PLAN of PROPOSED ADDITION



## A Wider Program . . .

In 1891, the typical church was little more than a Sanctuary and a Preacher. Today, many a vigorous church is almost emulating St. Paul by being "all things to all men, if by all means I can win some." It is seeking to meet the needs of the entire family, and to carry on a seven-days-a-week program, just as Dr. Little urged at the Dedication. The most obvious result is that thousands of churches, all across the country, have rebuilt and enlarged their church plants, usually with major emphasis on the Church School and a stronger Youth Program.


In this period of growth and change, MEMORIAL CONGREGATIONAL CHURCH should never forget that it is a *family church*, in a community of homes. We must quickly prepare for the increasing numbers of boys and girls that will come to us if we are ready to receive them. Better assembly and classrooms for the Sunday School are obviously the first goal.

As the only active social and recreational center for young people in South Sudbury, we have a wonderful opportunity. The new Fellowship Hall will be just what we need — especially when it is supplemented by Stage, Kitchen, Storage Room, and several other rooms available during the week for other activities. Already the church sponsors Cubs, Boy Scouts and Explorers; the parsonage is regularly used by Girl Scouts.

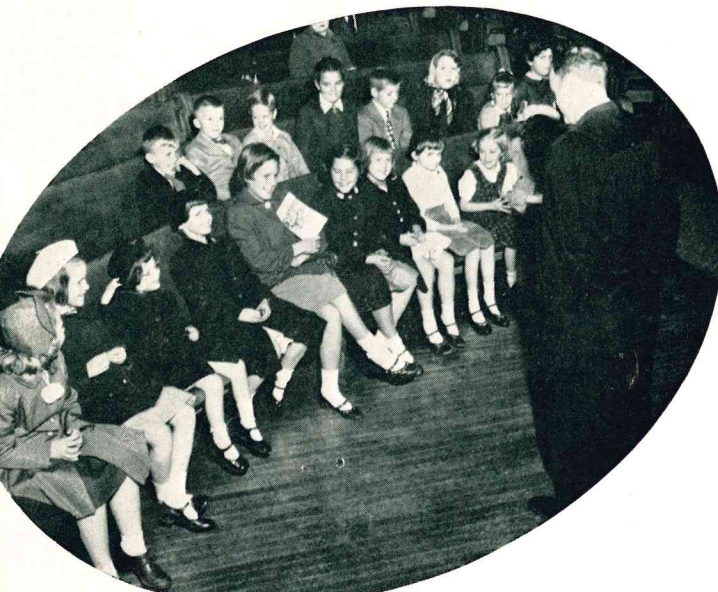
We already have a number of active organizations, including — in addition to those already mentioned — a Woman's Choral Society, Senior and Junior Choirs, a Community Nursery School meeting in our church, and a growing Pilgrim Fellowship. We are building in order to make our plant and our program *more efficient* in its religious, educational and social service to the Congregation, the Parish, and the whole Community.

In all these fields nothing can take the place of the leadership supplied by a church, and by the men and women in a church. It is ours to maintain the influence of the past in a new and changing situation calling for imagination and resourcefulness. A "Community Church" like ours must seek to fill whatever needs appear.

The demand is already here. We must meet it.



The teaching of God's Truth certainly merits as good facilities as the teaching of arithmetic on weekdays.



The Children's Sermon has come to occupy a definite place in the modern program of Christian Education.





MEMORIAL CONGREGATIONAL CHURCH  
South Sudbury, Massachusetts

We live in a Community that is growing rapidly. The meaning of this fact for the future of our Church is obvious. Either we grow with the Town or we do not. This is our choice and our challenge.

Any one of our Church School teachers will testify that the crying need for growth has already arrived. Even now our Church School has grown to the point where the overcrowding of our present facilities is genuinely desperate.

Our expansion program will require effort. It will require strict discipline and careful planning. It will require generosity and sacrifice. But is this not true of any noteworthy accomplishment? I have every confidence that we will rise to the challenge and usher in a new era in the history of our Church.

Sincerely, your minister,

*Ernest Boderweber, Jr.*

## Goals . . .

The *physical* goal toward which we are all working is the new Parish House described in this leaflet. The *spiritual* goal is a church reborn, a church re-dedicated to the larger service demanded by a new day in Sudbury. We know that the effort to increase its outreach will strengthen its own inner life.

The *individual* goal is active personal participation in the group project. This, too, will carry on a true tradition, for the Church's very name — "Memorial" — reminds us of the lives that have been built into it. In accepting the keys of the new church sixty-four years ago, Deacon F. F. Walker said: "We accept this house as a memorial, a place which keeps in remembrance; a memorial, not so much for the money given, but rather for that rich legacy of Christian character which has been left us."

Today, in a community re-born, we can no longer be content to live on a legacy from the 19th Century. It is now time for *us* to build, not alone for ourselves and our children, but for the families moving into our village in the years ahead, who will be seeking a friendly church home.

## Working for The Church

One of the first questions asked about a man is "What does he do? For whom does he work?" The man himself feels that he is *working for his family*. But it does not stop there. Part of what he earns goes to support various units of government. Part he *gives* to his church, his hospital, and the other philanthropic agencies that minister to human betterment. He works for them, too.

A new concept is stimulating giving to our churches as never before. It is this: *working* for the church.

In our own building project the Committee asks you to consider this proposal: "*Will you work one day a month for your church for the next thirty months?*"

If you will — by pledging to the Building Fund your income for those days — the project can be carried to a splendid conclusion, meeting a genuine need.

We hope you will take the question to heart. A member of the Committee will call on you personally to discuss the matter, to answer your questions, and to help you work out the most satisfactory way of co-operating in this fine Christian enterprise.

# MEMORIAL CONGREGATIONAL CHURCH

South Sudbury, Massachusetts

Rev. Ernest Bodenweber, Jr., Minister

## DEACONS

Clifton F. Giles — Term expires 1955  
(to fill John Hall's unexpired term)

Arthur E. Fay, Sr. — until Jan. 1957  
Luther M. Child — until Jan. 1956

## COMMITTEE ON RELIGIOUS EDUCATION

Rev. Ernest Bodenweber  
Dr. J. Carrell Morris  
Dr. John D. Copp

Mrs. Roland Walton — until Jan. 1955  
Mrs. Robt. C. Hall — until Jan. 1956  
Mrs. James L. Bartlett — until Jan. 1957

## CLERK

William E. Downing — until Jan. 1955

## TREASURER

John A. Anderson — until Jan. 1955

## SUPERINTENDENT OF SUNDAY SCHOOL

Dr. J. Carrell Morris — until Jan. 1955  
Miss Elizabeth Walker — President of Woman's Association  
Mrs. Ilene Whelpley — President of Homemakers Group

## STANDING COMMITTEE

Edward H. Hill — until Jan. 1956  
Donald L. Atkins — until Jan. 1955  
Mrs. Maxwell Eaton — Term expires 1957

Edward Plumley — until Jan. 1957  
Elinor L. Bentley — until Jan. 1955

## MUSIC COMMITTEE

Mrs. Alan F. Flynn — until Jan. 1955  
Albert Tallant — until Jan. 1955  
Mrs. Dorothy W. Poole — until Jan. 1957  
Miss Ruth Buxton — until Jan. 1956  
Mrs. Richard Whelpley — until Jan. 1956

## MODERATOR

Leslie C. Hall — until Jan. 1955

## COLLECTOR

Theodore R. Harding — until Jan. 1955

## BUILDING COMMITTEE

Donald Atkins  
Arthur E. Fay, Sr.  
Edward Plumley

